

LOCKERS

PRODUCT RANGE

&

BENCHING

PRODUCT RANGE



CONTENTS

LOCKERS

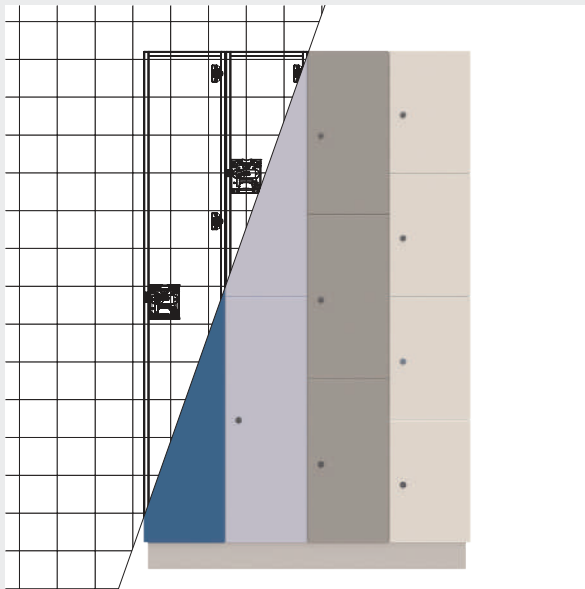
Our Lockers	03
Dry Area Lockers	04
Dry Area Locker Options	05
Robust Dry Area Lockers	06
Robust Dry Area Locker Options	07
Wet Area Lockers	08
Wet Area Locker Options	09
Hasp Lock	10
Cam Lock	11
Coin Classic Lock	12
Mifare Wristband Lock	13
Engraving	14
Our Benching	15-16



WHO ARE TOTAL CUBICLE SOLUTIONS?

Total Cubicle Solutions offer an extensive range of Cubicles, Wall Cladding Boards, IPS Duct Panels, Vanity Units, Benching and Lockers.

Manufactured in the UK, our innovative products are made to the highest of standards. Each of our Washroom Systems are tailored for functionality by our in-house team allowing you confidence specifying Total Cubicles for all your Washroom needs. With over 45 years' industry experience, our friendly staff will offer helpful advice on all our products.



Choose your Lockers

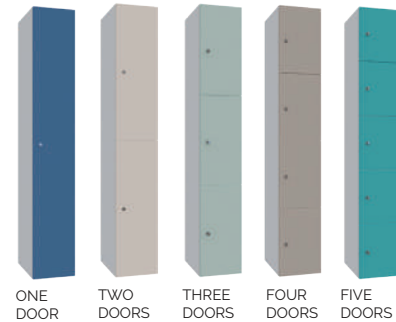
1

3 Locker Options



2

5 Door Options



Dimensions

Our locker carcasses are designed to the standard dimensions of:
Height: 1800mm, Width: 300mm, Depth: 400mm.
We can also customise the locker dimensions to suit your exact requirements, just ask one of our sales team for more information.

Choose your Locks

3

4 Lock Options:



Total Cubicle Solutions offer Lockers for all environments, from dry areas to wet areas, and from low to high traffic, there is an option to meet your exact specifications.

Our lockers come in 3 ranges, Dry Area (low to medium traffic), Robust Dry Area (medium to high traffic), and Wet Area (high traffic and suitable for wet areas) all of which come in door options from 1 to 5.

Lock Options

Total Cubicles offer 4 lock options, Hasp Lock, Cam Lock, Coin Classic Lock and Mifare Wristband Lock. These locks offer mechanisms specific to a certain environment with entry options to meet your security requirements.

Colour Options

We offer a number of different colour options, ranging from pastel tones to bold colours, as well as our textured colours such as our stipple and wood grain colours.

Digital Printing Service

To further customise the aesthetic of your lockers, we also offer a Digital Printing Service in which we can print an image from our library, or an image of your choice onto our Locker Doors.

CAD Engraving

We offer a CAD Engraving service, in which we can drill any design into our SGL door options to create a professional visual statement enhancing brand identity.
here are several ways you can order Fast-Fit Cubicles.

DRY AREA LOCKERS

LOCKERS



KEY FEATURES

LOCK OPTIONS

There are 4 lock options to choose from.



Hasp



Cam Lock



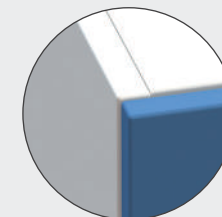
Coin Classic



Mifare Wristband Lock

MATERIAL

 19mm High Performance Core



HINGE

110° Hinge


Nickel Plated

Concealed & Robust

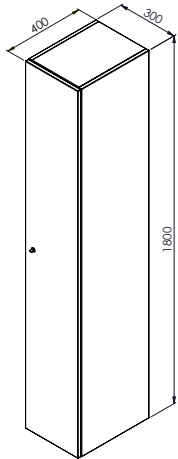


SUITABILITY

Traffic:  Low to Medium

Suitability:  Suitable for Dry Areas

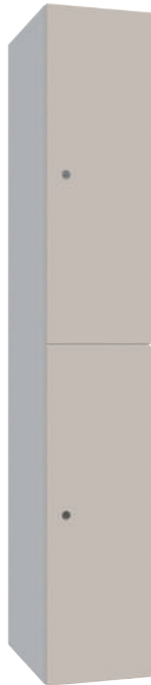
Dry Area Locker Door Options



STANDARD LOCKER DIMENSIONS



LOKR-M1 ONE DOOR COIN CLASSIC LOCK



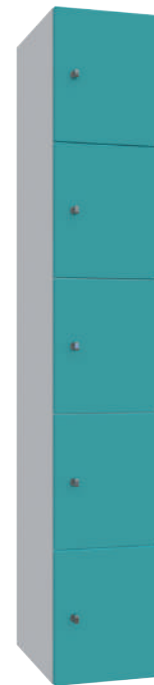
LOKR-M2 TWO DOORS CAM LOCK



LOKR-M3 THREE DOORS HASP LOCK



LOKR-M4 FOUR DOORS MIFARE WRISTBAND LOCK



LOKR-M5 FIVE DOORS HASP LOCK

KEY FEATURES

Material: Carcass: High Performance Core
Doors: High Performance Core

Traffic: Low to Medium

Suitability: Suitable for Dry Areas

DRY AREA LOCKER LIBRARY

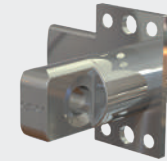
HPC	LOW TO MEDIUM TRAFFIC
LOKR-M1	ONE DOOR
LOKR-M2	TWO DOORS
LOKR-M3	THREE DOORS
LOKR-M4	FOUR DOORS
LOKR-M5	FIVE DOORS

LOCK OPTIONS

Hasp Lock LOKR-HASP

Hasp Front

Hasp Back



- Finish: Chrome
- Operation: Padlock
- Security: High Level
- Suitability: Suitable for Wet Areas

Cam Lock LOKR-CAM

Cam Lock Front

Cam Lock Back



- Finish: Chrome
- Operation: Key Lock
- Security: Standard Level
- Suitability: Suitable for Wet Areas

Coin Classic Lock LOKR-COIN CLASSIC

Coin Classic Front

Coin Classic Back



- Finish: Lock Body: PC/ABS, Lock: Chrome
- Operation: Coin Lock
- Security: Medium to High Level
- Suitability: Suitable for Wet Areas

Mifare Wristband Lock LOKR-MIFARE WRISTBAND

Mifare Wristband Front

Mifare Wristband Back



- Power Supply & Battery Life: 4 AA 1.5V Batteries Lasts 30,000 Cycles
- Operation: NFC Wireless Connection
- Security: High Level
- Suitability: Suitable for Dry Areas

ROBUST DRY AREA LOCKERS

LOCKERS



KEY FEATURES

LOCK OPTIONS

There are 4 lock options to choose from.



Hasp Lock



Cam Lock



Coin Classic Lock



Mifare Wristband Lock

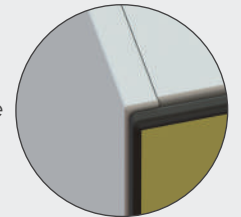
MATERIAL



Carcass: 19mm High Performance Core



Door: 12mm Solid Grade Laminate

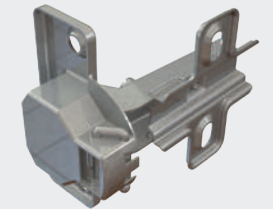


HINGE

110° Hinge

Nickel Plated

Concealed & Robust



SUITABILITY

Traffic:



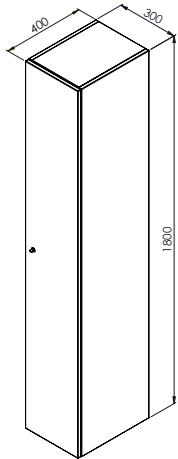
Medium to High

Suitability:



Suitable for Dry Areas

Robust Dry Area Locker Door Options



STANDARD LOCKER DIMENSIONS



LOKR-MS1 ONE DOOR COIN CLASSIC LOCK



LOKR-MS2 TWO DOORS CAM LOCK



LOKR-MS3 THREE DOORS HASP LOCK



LOKR-MS4 FOUR DOORS MIFARE WRISTBAND LOCK



LOKR-MS5 FIVE DOORS CLASSIC COIN LOCK

KEY FEATURES

Material: Carcass: High Performance Core
Doors: Solid Grade Laminate

Traffic: Medium to High

Suitability: Suitable for Dry Areas

ROBUST DRY AREA LOCKER LIBRARY

HPC & SGL MEDIUM TO HIGH TRAFFIC

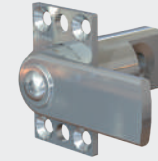
LOKR-MS1	ONE DOOR
LOKR-MS2	TWO DOORS
LOKR-MS3	THREE DOORS
LOKR-MS4	FOUR DOORS
LOKR-MS5	FIVE DOORS

LOCK OPTIONS

Hasp Lock LOKR-HASP

Hasp Front

Hasp Back



- Finish: Chrome
- Operation: Padlock
- Security: High Level
- Suitability: Suitable for Wet Areas

Cam Lock LOKR-CAM

Cam Lock Front

Cam Lock Back



- Finish: Chrome
- Operation: Key Lock
- Security: Standard Level
- Suitability: Suitable for Wet Areas

Coin Classic Lock LOKR-COIN CLASSIC

Coin Classic Front

Coin Classic Back



- Finish: Lock Body: PC/ABS, Lock: Chrome
- Operation: Coin Lock
- Security: Medium to High Level
- Suitability: Suitable for Wet Areas

Mifare Wristband Lock LOKR-MIFARE WRISTBAND

Mifare Wristband Front

Mifare Wristband Back



- Power Supply & Battery Life: 4 AA 1.5V Batteries Lasts 30,000 Cycles
- Operation: NFC Wireless Connection
- Security: High Level
- Suitability: Suitable for Dry Areas

WET AREA LOCKERS

LOCKERS



KEY FEATURES

LOCK OPTIONS

There are 4 lock options to choose from.



Hasp Lock



Cam Lock



Coin Classic Lock

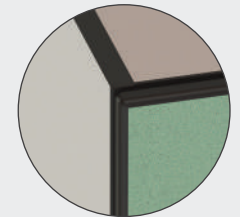


Mifare Wristband Lock

MATERIAL



12mm
Solid
Grade
Laminate

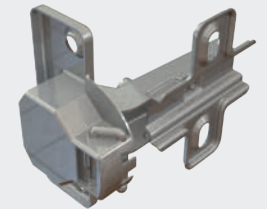


HINGE


110° Hinge


Nickel Plated

Concealed & Robust

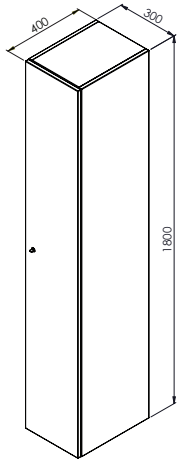


SUITABILITY

Traffic:  High

Suitability:  Suitable for Wet Areas

Wet Area Locker Door Options



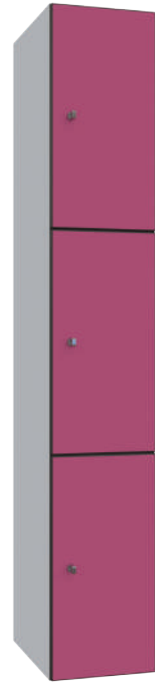
STANDARD LOCKER DIMENSIONS



LOKR-S1 ONE DOOR COIN CLASSIC LOCK



LOKR-S2 TWO DOORS CAM LOCK



LOKR-S3 THREE DOORS HASP LOCK



LOKR-S4 FOUR DOORS MIFARE WRISTBAND LOCK



LOKR-S5 FIVE DOORS CLASSIC COIN LOCK

KEY FEATURES

Material: Carcass: Solid Grade Laminate
Doors: Solid Grade Laminate

Traffic: High

Suitability: Suitable for Wet Areas

WET AREA LOCKER LIBRARY

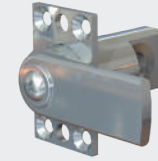
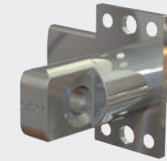
SGL HIGH TRAFFIC	
LOKR-S1	ONE DOOR
LOKR-S2	TWO DOORS
LOKR-S3	THREE DOORS
LOKR-S4	FOUR DOORS
LOKR-S5	FIVE DOORS

LOCK OPTIONS

Hasp Lock LOKR-HASP

Hasp Front

Hasp Back



- Finish: Chrome
- Operation: Padlock
- Security: High Level
- Suitability: Suitable for Wet Areas

Cam Lock LOKR-CAM

Cam Lock Front

Cam Lock Back

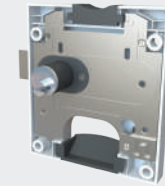


- Finish: Chrome
- Operation: Key Lock
- Security: Standard Level
- Suitability: Suitable for Wet Areas

Coin Classic Lock LOKR-COIN CLASSIC

Coin Classic Front

Coin Classic Back



- Finish: Lock Body: PC/ABS, Lock: Chrome
- Operation: Coin Lock
- Security: Medium to High Level
- Suitability: Suitable for Wet Areas

Mifare Wristband Lock LOKR-MIFARE WRISTBAND

Mifare Wristband Front

Mifare Wristband Back



- Power Supply & Battery Life: 4 AA 1.5V Batteries Lasts 30,000 Cycles
- Operation: NFC Wireless Connection
- Security: High Level
- Suitability: Suitable for Dry Areas

HASP LOCK

LOKR-HASP

LOCKERS

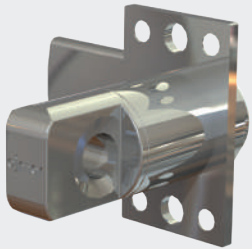
A simple and effective Padlock Lock.

Designed for lockers up to 20mm, the Hasp lock is robust, and highly resistant to humidity.

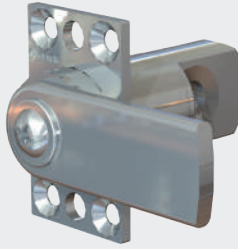
It's easy to mount system offer a simple and effective solution for heavy duty use in collective installations.

Featuring an anti-rotation system.





Hasp Front

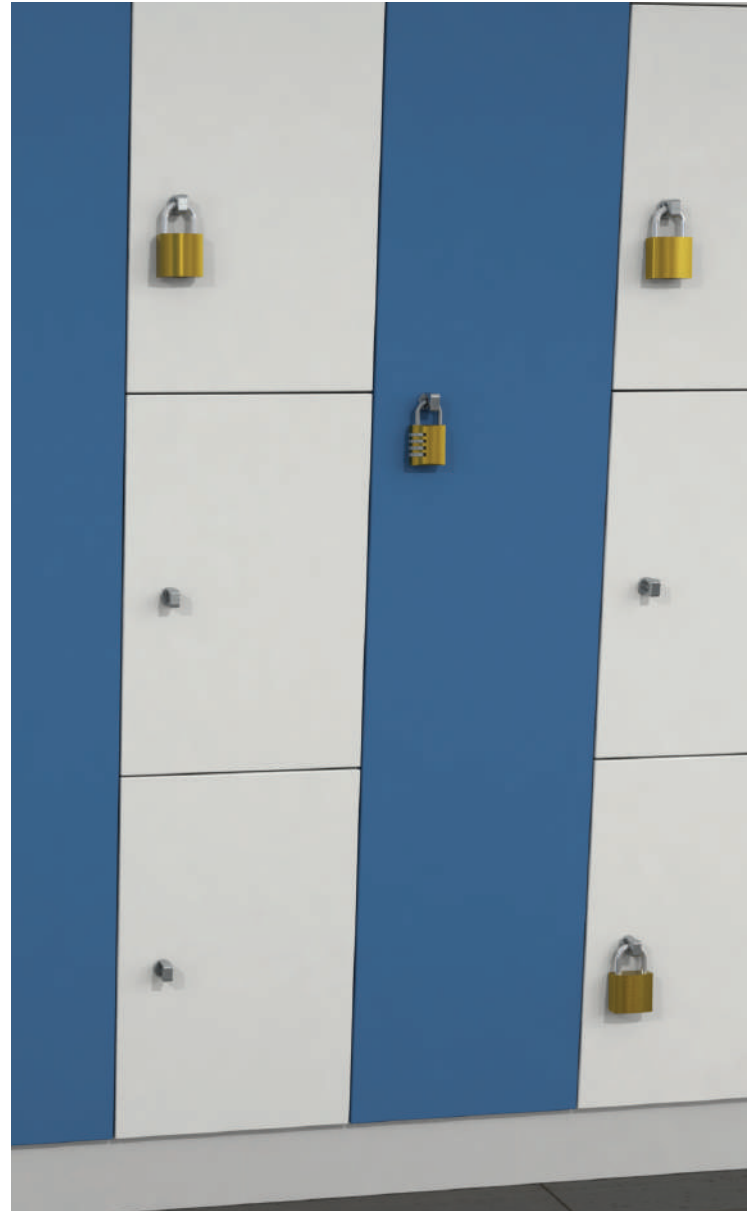


Hasp Back



KEY FEATURES

- Finish:  Chrome
- Operation:  Padlock
- Security:  High Level
- Suitability:  Suitable for Wet Areas



Lockr - Hasp Door Front



Lockr - Hasp Door Back



Lock range especially indicated for damp environments.

The Cam Lock is intended for facilities where lockers are dedicated to one specific environment, the lock is particularly suited to use in wet areas.

The stainless steel pins, a unique solution in the industry, make the locks highly resistant to corrosion and constant use.





Cam Lock Front

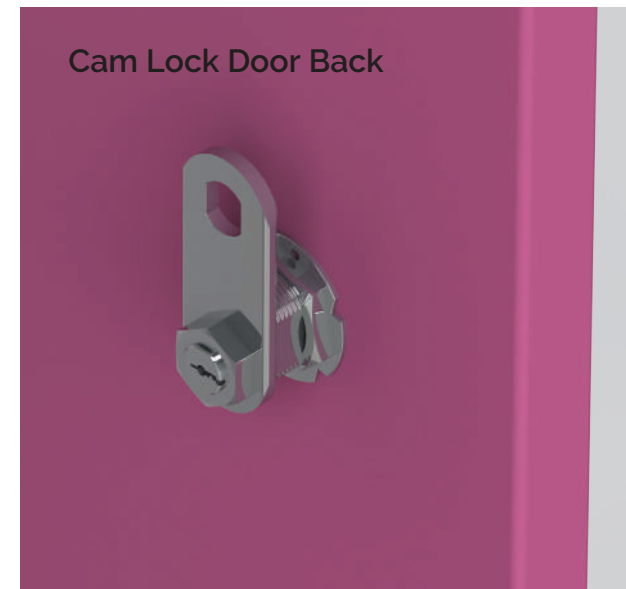
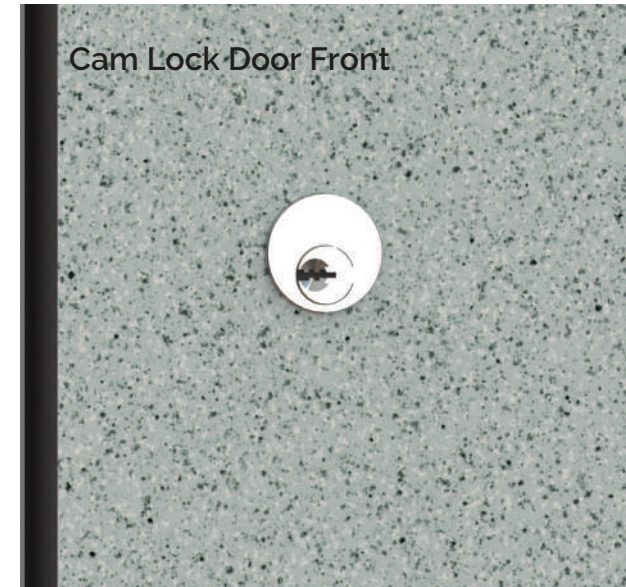


Cam Lock Back



KEY FEATURES

- Finish:  Chrome
- Operation:  Key Lock
- Security:  Standard Level
- Suitability:  Suitable for Wet Areas



COIN CLASSIC LOCK

LOKR-COIN CLASSIC

LOCKERS

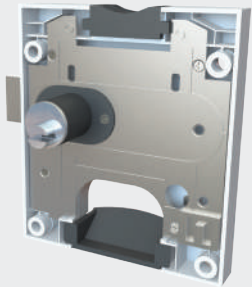
Coin Operated Locks For wet areas.

The material used in the manufacture of these coin locks are highly resistant to corrosion, making them the ideal solution for wet areas.

The stainless steel pins offer greater resistance and security than conventional brass pins.

The Lock is supplied with a security key, which is flat and reversible and thus pleasant and easy to use.






Coin Classic Front



Coin Classic Back

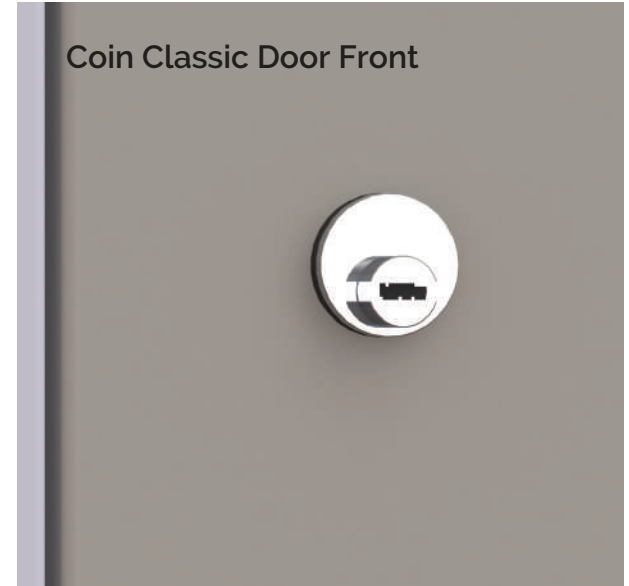


KEY FEATURES

- Finish:  Lock Body: PC/ABS
Lock: Chrome
- Operation:   Coin/Key Lock
- Security:  Medium to High Level
- Suitability:  Suitable for Wet Areas



Coin Classic Door Front



Coin Classic Door Back



MIFARE WRISTBAND LOCK

An intelligent locking system.

Our Mifare Wristband Lock offers simple operation and a high level of security.

It is the technological alternative to mechanical locks. Its operation uses a proximity device, (a wristband) for ease of use.

Mifare Wristband Front


Mifare Wristband Back



Wristband

KEY FEATURES


Power Supply & Battery Life:

 4 AA 1.5V Batteries
Lasts 30,000 Cycles


Operation:

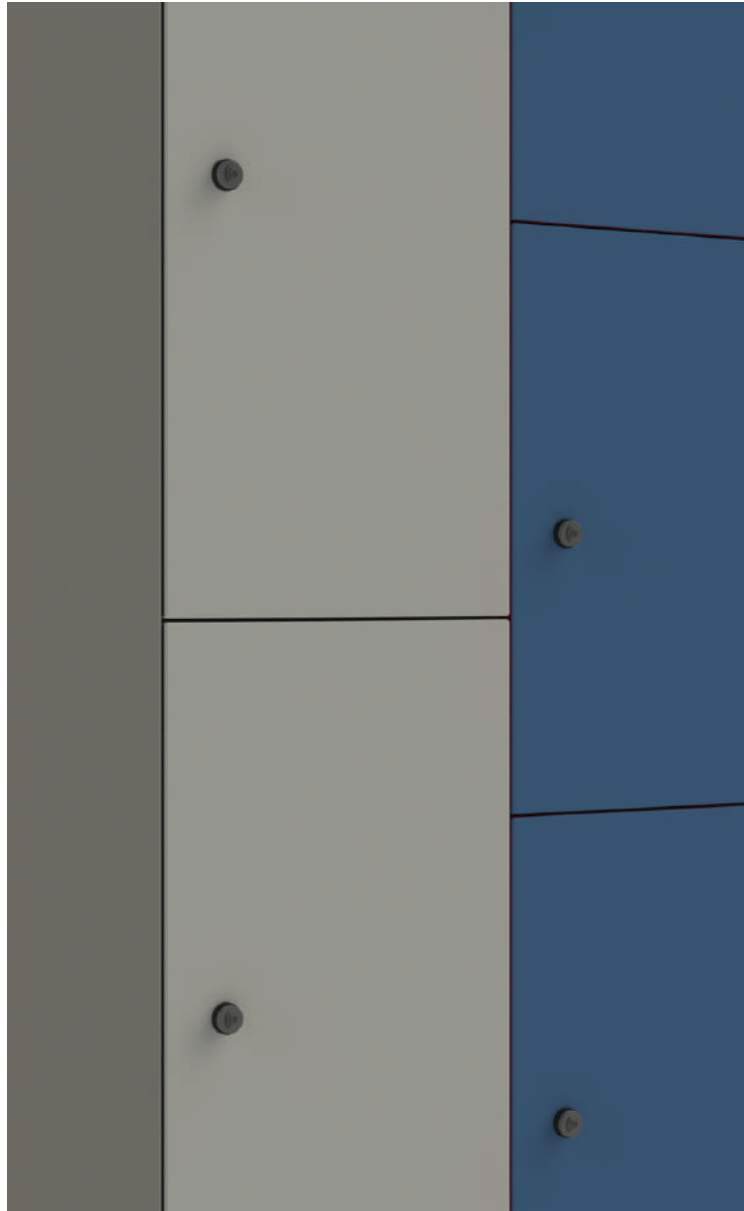
 NFC Wireless Connection
Wristband Lock

Security:

 High Level

Suitability:

 Suitable for Dry Areas



Mifare Wristband Door Front



Mifare Wristband Door Back

ENGRAVING

CNC Engraved Signage

Signage can be engraved into a Solid Grade material by our CNC machine.

Signage can be applied directly to the products we supply or provided loose for positioning and fixing on-site.

Our CNC machine is capable of engraving into sheet materials up to 3200 x 1200 mm in size.

The CNC machine is also capable of cutting sheet material into any 2D shape, allowing you to further customise your signage plaques.

Some of the standard signs we offer are displayed to the right. We also offer a custom sign service, please enquire for details.



Biesse Rover 27
CNC Machining Centre



SGL Engraving

Material  Solid Grade Laminate

Thickness: 12 mm

Edging Material: All edges radiused and polished (black)

Suitability of Use: High traffic,
High moisture areas

Select Your Product

Engraving into SGL reveals its black core, to achieve best results we therefore recommend engraving into light-medium shades of laminates.

Engraving can be applied directly our SGL products such as:

- Lockers
- Cubicles
- Vanity Units
- Signage
- Bespoke Projects

Select your Design

Our Library
We have a Library of standard Signs to choose from, all of which can be scaled to your required dimensions.

Your Designs
Alternatively, you can supply your own signage designs in dxf format.

Signage



Logo's



Engraving Options



Our Benching & Storage Solutions come in either SGL or Hardwood Slats

Our SGL Slat Benching

Our SGL benches are cut from Solid Grade Laminate, which is robust, sturdy and long lasting. The laminate used can be produced in a range of colours and faux wood designs.

It is completely water-proof and will not be damaged by most powerful cleaning products. These benches are usually implemented within changing rooms, swimming baths etc.

Though due to the strong, robust laminate that the benches are built from, vandalism is incredibly difficult. This makes the product perfect for places with high usage and unreliable users. Such as schools and even prisons.

Our Hardwood Slat Benching

Our Hardwood Slat Benches, Shoe racks and Peg Rails are most commonly installed in schools and colleges. Our products can be made to virtually any dimensions.

Our shoe racks and peg rails are ideal for school cloakrooms. They come in a range of colours and woods, with more colorful options for younger children. All of our benching options can be cleaned without the risk of damage.

MADE TO MEASURE

All our Products are made to measure to suit specific requirements, all of which are fabricated and then a thermoplastic coating powder is applied by electrostatic spraying.



Stage 1

All metal work is fabricated from mild steel, pre drilled and (MIG) welded ready for assembly.



Stage 2

Framework is then coated in a colour of your choice from our extensive colour range using a thermoplastic coating powder.



Stage 3

All Slats are manufactured from quality **Hardwood, (Beech, Oak or Ash)** with pencil round edges, sealed and spray polished.

Solid Grade Laminate is also available in various colours. Hooks are then applied to peg rails at 150mm centres.

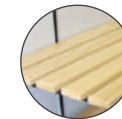


Stage 4

Total Cubicle Solutions deliver units flat packed as standard. We can deliver units built up ready for you to install at a small cost.

OUR SLAT MATERIALS

Our Hardwood Slat Benching



Beech



Oak



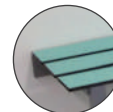
Ash



Our SGL Slat Benching

Thickness: 12 mm

Edging Material: All edges radiused & polished (Black)



Suitability of Use: High traffic, High moisture areas

Colour Options: Available in a wide range of colours & effects.



OUR BENCHING

BENCHING RANGE



Single Sided Island Units
Available with Optional Shoe Tray or Over Head Shelf (back Modesty Panel not Supplied)

Double Sided Island Units
Available with Optional Shoe Tray or Over Head Shelf



All Floor Fixed Benching
Available with Shoe Tray or Plastic Feet for none floor fixing.



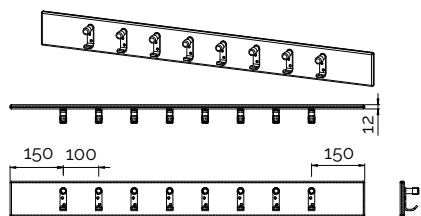
Wall to Floor Benching
Available with Shoe Tray or Plastic Feet for none floor fixing.



Shelf
With integral Peg Rail.



Assembly SAA Coat Hooks
1000 L x 100 W
8 Coat Hooks



Our Hooks and Peg Boards available in different colours and materials

STORAGE SOLUTIONS



Mobile Unit Type A
1200mm L x 1400mm H x 560mm W
12 Hooks per Unit and Braked Castor Wheels



Mobile Unit Type B
1200mm L x 1400mm H x 560mm W
24 Hooks per Unit and Braked Castor Wheels



Mobile Unit Type C
1200mm L x 450mm W
Available in:
Infant (1125mm H),
Junior (1375mm H)
Senior (1680mm H)
Can be wall fixed



Tip Up Seat
Seat 450mm W x 400mm D.
Wall Fixing Plate 200mm H x 500mm W.
Ideal as a Shower or Cubicle Seat



Locker Stand
Available in various widths to suit upto 6 Lockers.
All floor fixed or wall to floor fixed



Seat with Back Rest
Height of Back Rest:
Infant (505mm H),
Junior (690mm H)
Senior (830mm H)
Shoe Basket Optional



Boot Hangers
Each unit Fits 12 Boots
750mm H
Number Discs are available upon request



Customised Benching
(to allow for pipes etc)

Sales Office 0151 298 1509
London Office 020 7458 4402
Mobile Enquiry's 07850 079616
Fax 0151 298 2276
Email sales@totalcubicles.co.uk

Find us on: